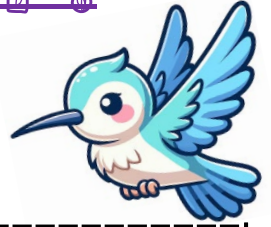




# MONTHLY Bee At L.P.

Classroom Name: Hummingbird

Month: April 2026



## Announcements

- We will be completing our final assessments for the school year this month in preparation for our May Parent/Teacher conferences. Please look out for sign-up sheets after Spring Break.

## Important Dates

- 4/3: Bunny Visit (Please arrive to school by 9AM)
- 4/13-4/17: Spring Break NO SCHOOL
- April Classroom Birthdays:
  - 4/10: Maddie
  - 4/24: Ms. Bri

## Reminders

- Check Procure regularly for important messages and reminders.
- Please check your child's file daily and take home all their amazing school work.
- Children must be signed in and out everyday through the Procure App.
- Class starts at 8:45AM, please arrive on time so that your child does not miss out on any important learning opportunities.

## Focus of the Month

- Themes: The Insect World, Plants, & Arachnids
- Artist of the Month: Claude Monet
- Composer of the Month: Robert Sherman
- Phonics: Digraph - ch, ph, oo, ee/ea, Sight Words - this, to, up, we, what, who, was, said, Word Family - am, en, et, ig, in, ip, Rhyming, & Beginning-Middle-End.
- Math: Number review 1-100, Counting by 2's, 5's, 10's, Adding & Subtraction, 2D (flat) & 3D (solid) Shapes, Patterns, Writing 0-50