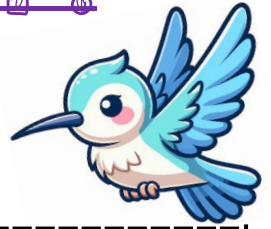




MONTHLY Bee At L.P.

Classroom Name: Hummingbird

Month: January 2026



Announcements

- Welcome Back & Happy New Year!
- Our second assessments were sent out over break, if you have any questions, please reach out to your child's teachers.
- We will be celebrating our 100th Day of school on January 21st, please keep an eye out for further information.

Important Dates

- 1/19: NO School for MLK Day
- 1/21: 100th Day Celebration
- January Classroom Birthdays:
 - 1/1: Kit
 - 1/11: Neev
 - 1/13: Luciana
 - 1/20: Arna
 - 1/25: Leo

Reminders

- It is important to make sure to sign your child in/out every day using Procare. You can either use the app on your phone or use your PIN # at the tablet in the main office.
- Please bring your child a jacket every day.
- Make sure all of your child's belongings are labelled, especially items like their water bottles, extra clothes, and jackets.
- Check your child's file daily and take home all their amazing school work.

Focus of the Month

- Themes: Continue Classic Stories, Winter, The Water Cycle, Arctic & Antarctic Animals, 100 Day Celebration!
- Artist of the Month: Kandinsky
- Composer of the Month: Gaubert
- Phonics: Letters - Nn, Ii, Yy, Dd, Sight Words - are, you, he, she, Vowel Blends/Vowel Readers - Mac and Tab, Digraphs.
- Math: Counting & recognizing #'s 1-100, Counting by 2's, 5's, & 10's, Patterns, Simple Addition & Subtraction, More and Less.