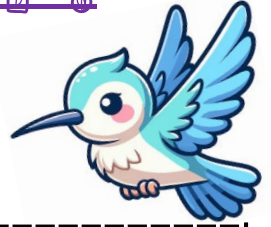




MONTHLY Bee At L.P.

Classroom Name: Hummingbird

Month: October 2025



Announcements

- For the Halloween parade, please bring your child's costume to school and their teachers will change them into their costumes after rest time. Please do not bring masks or weapons with their costumes.
- Assessments have been completed, and children are in their small groups.



Important Dates

- 10/6: Picture Day!
- 10/10: Field Trip Forms DUE!
- 10/17: Swank Farms Field Trip (School CLOSED during and after field trip)
- 10/30: Halloween Parade & Performance @ 4:00PM - Families are encouraged to attend 😊
- 10/31: Pajama/Movie Day
- October Classroom Birthdays:
 - 10/20: Miss Mary

Reminders

- Please check your child's classroom file daily to see all the amazing classwork and art work they are completing during the day.
- It is very important to make sure your child is being checked in/out every day on the ProCare App.
- Make sure to label all of your child's belongings, especially their jackets, lunchboxes, water bottles, extra clothes, etc.

Focus of the Month

- Themes: Our Busy Bodies, The Five Senses, Halloween.
- Artist of the Month: Salvador Dali
- Composer of the Month: Beethoven
- Phonics: Letters - Pp, Ww, Xx, Zz, Hh, Sights Words - can, my, go, to, me.
- Math: Counting, Recognition & Writing 0-10, 2D (flat) & 3D (solid) shapes, Patterns, Introducing Measurement & Money (Coins).